

2013

# Programming Manual

Security Module

V2.2



**G4**

Created By Terry



## Contents

### 1-Introduction

Objective 1-1

S-bus products 1-2

### 2- Start Programming

S-Bus Programming Software overview 2-1

S-bus Configuration Software basic setting 2-2

Devices address and Search 2-3

Steps of basic programming 2-4

What is the MAGIC LINE 2-5

### 3- Security Module

Overview 3-1

Security Module Configuration 3-2

Security Activation via DDP 3-3

## Before you begin this course

Before you begin this course, you should have:

- Understand the basic bus Diagram Connection Topology
- Understand the Lighting and HVAC Connections Diagram
- Basic Knowledge about IP setting. (please see 2-2)
- Basic Knowledge of using Windows operating system.
- Basic Knowledge of using Windows Painter.



## Prerequisites

Either

- Products overview course.
- Installation Course.

## How this course is organized

Lighting and DDP Programming Guide Course Organized in Simple way of

Product overview, Example Picture, ( Notices) , (  Advices),

(  Example)

For Training Course Request Please apply online

[www.smarthomebus.com](http://www.smarthomebus.com)

## 1- Introduction

Welcome to S-BUS manual Programming Guide, you are now a Beginner Programmer who will know soon how the S-bus Programming is simple.

### 1-1 Objective:



After this course you will be able to program the Lights Dimmers and relays with the switches Panel, Program curtain shades control, program the Air condition setting and DDP panel, Security control, SMS reports, and start with Motion sensor and Automate your Project and many more...

### 1-2 S-Bus products:

S-BUS Products vary with its powerful and multi functions, it has the high power dimmer and relay, Curtain, DMX and LED controller, Wall switches and Dynamic Display Panel "DDP", HVAC2 Air condition control and different type of sensors, like Motion sensor, light intensity sensor, Ultrasonic sensor, Dry input sensor, Analog input, current sensor, Power meter, Infrared receivers and transmitter, Security and Automation, Audio Module, Security Module, RS232, Programming and integrations Module

## 2- Start Programming

In smart home G4 there are two ways for programming:

-  Manual Way (For Basic Programming).
-  PC /Laptop Way (For Basic and Advanced Programming).

### 2-1 S-Bus Programming Software overview

You need on this lesson: to have your computer with you. Running on Windows Operating system, Smart Cloud **G4** software, Programming port SB-DN-1IP, that enable you to search for all the devices that connected to the bus network.

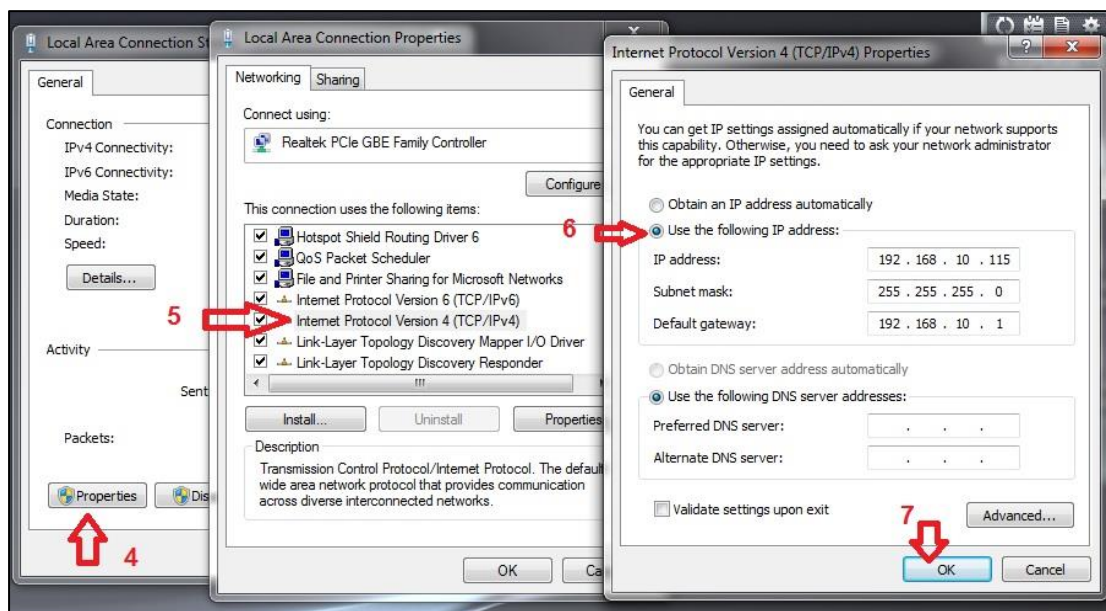
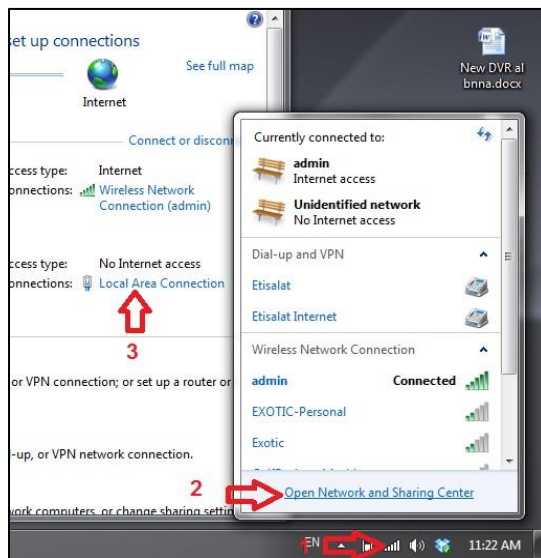
- 1- Install your S-bus configuration software in your Computer by pressing the **Setup** icon and follow the installation steps windows
- 2- Plug in your Ethernet cable (RJ45) in your PC and the other end in the **RSIP** module or **Zaduio** module then **Set** your computer IP Address, for example

IP	192.168.10.115
Subnet	255.255.255.0
Gateway	192.168.10.1



The default address for S-bus Product is **192.168.10.xxx**

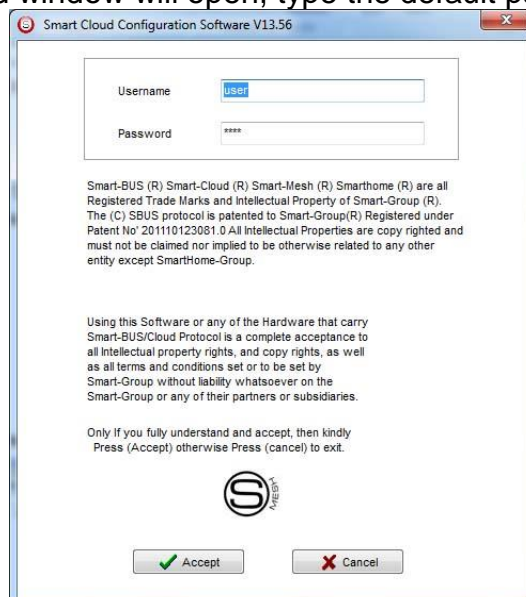




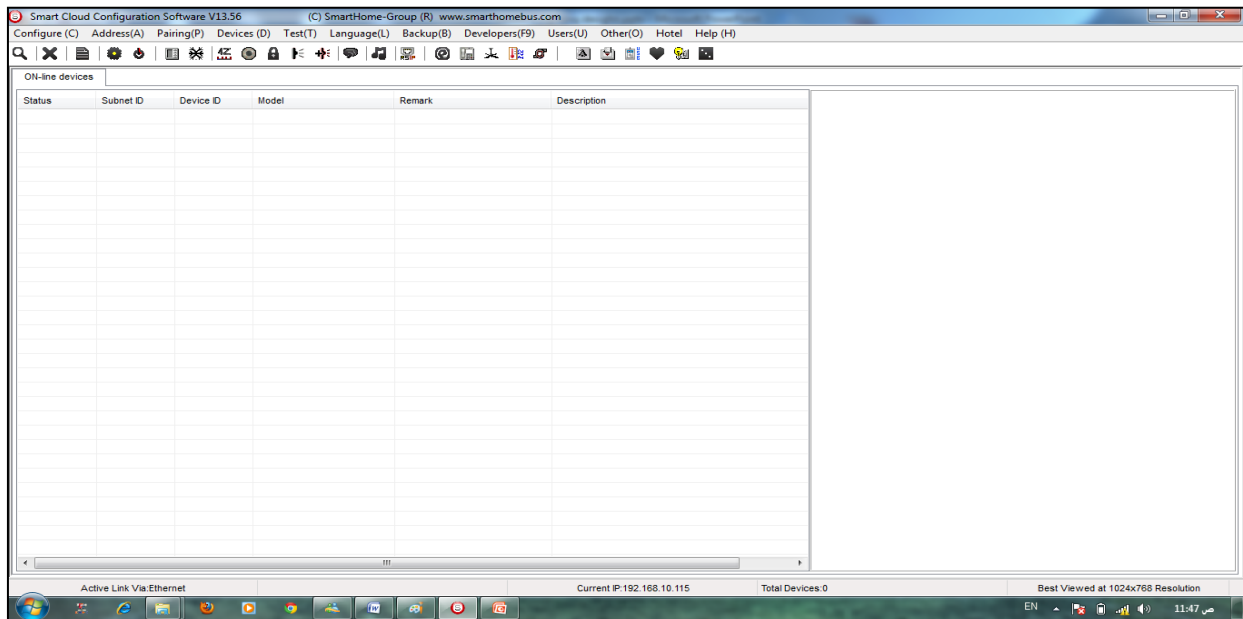
3- Run your S-bus smart cloud Software



4- The Password window will open, type the default password is user




## 5- Your software will start



6- You can see your current IP on the footer of the software as 192.168.10.115 then your IP setting is ok.



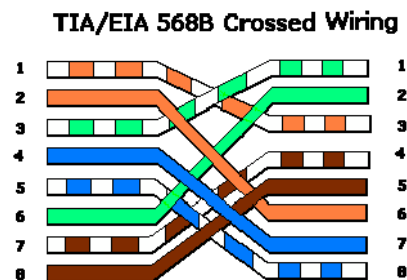
 *Set your computer IP setting before starting the S-BUS Smart Cloud.*

 *You should always reset your Module every time you change the IP Address in order the new setting to be Active.*

After you set your Module IP Address now you should connect the module to Your Computer Network in order to communicate. The connection can be in two ways

- 1- Connect the 1Port IP/RSIP Module to the HUB or Data Switch and connect your Computer to the same data Switch as standard straight cable Network wiring.

2- Without using the HUB or data switch you can use the cross cable to connect your computer directly to the IP Module, see the next cross wiring diagram of TIA/EIA 568B crossed wiring



You can use the **Line** command **Ping** to check your connection.

On your Computer, Go to start/ Run/ CMD then type **Ping 192.168.10.xxx**

If you see the following results similar to this Picture then your connection is successful

```
C:\WINDOWS\system32\cmd.exe
Microsoft Windows XP [Version 5.1.2600]
(C) Copyright 1985-2001 Microsoft Corp.

C:\Documents and Settings\Administrator>Ping 192.168.0.1

Pinging 192.168.0.1 with 32 bytes of data:

Reply from 192.168.0.1: bytes=32 time=45ms TTL=64
Reply from 192.168.0.1: bytes=32 time=39ms TTL=64
Reply from 192.168.0.1: bytes=32 time=2ms TTL=64
Reply from 192.168.0.1: bytes=32 time=2ms TTL=64

Ping statistics for 192.168.0.1:
    Packets: Sent = 4, Received = 4, Lost = 0 (0% loss),
    Approximate round trip times in milli-seconds:
        Minimum = 2ms, Maximum = 45ms, Average = 22ms

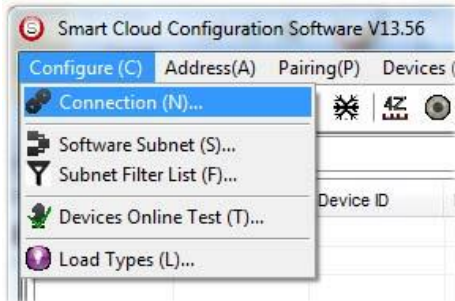
C:\Documents and Settings\Administrator>
```



Always the Programmer should carry with his programming kit the cross cable for programming without needs of the Data Switch or HUB.

## 2-2 S-bus Smart cloud Software basic setting

### Configure

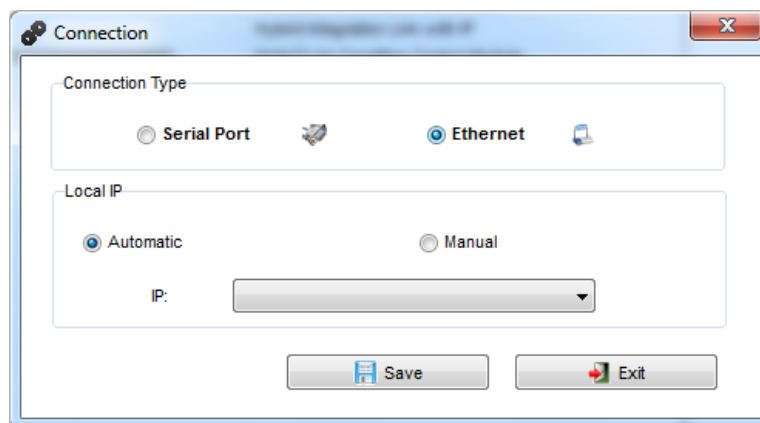


- **1- Connection**

You can change between Ethernet Connection and Serial Port connection,



the Serial Port connection is old, slow and no longer use. Always Keep the setting on Ethernet connection



Also you can choose between **obtain Local IP Automatically** (Default) , or to **input local IP Manually**.



*Input local IP manually you can use it for example, if you are using in your laptop or computer Wireless and wired Network with different IP setting, and you want to choose the right one of it for programming, and don't want your S-bus software to detect your other IP address Automatically.*

- **2- Software Subnet ID**

The S-bus configuration software have fixed Device ID (254), but you can change its subnet ID only, the default software subnet is (Default = 254)



*The software default subnet ID address is 254, Device ID 254, this address must be unique, in case other Device has the same address you will not be able to find that Device unless you change the Subnet of the software.*

- **3- Subnet Filter List:**

Here you can filter your subnet ID's that mean you can add more ranges if you have more than 254 devices so you can add another subnet ID

- **4- Devices On-Line test**

You can Deactivate or activate the auto test of Online devices (Activate is Default).

- **5- Load type**

You can add some Remarks to your Load type to use it as reference and print it out later on the excel sheet.

### **Address**

Here you can search for the Device Addresses and load the Network and solve any conflict in the address. (For more Information see 3-2)

### **Pairing**

You can enable pairing or disable either for one device or for all devices, disable meaning you can't program S-bus modules in manual anymore until you enable it again.

### **Devices**

You can go here directly to Devices setting Categorized by type

### **Test**

This is important Function to check your Lights Circuit by flashing the lights ON/OFF and then you can give it name (for more information see 3-3 section).

### **Language**

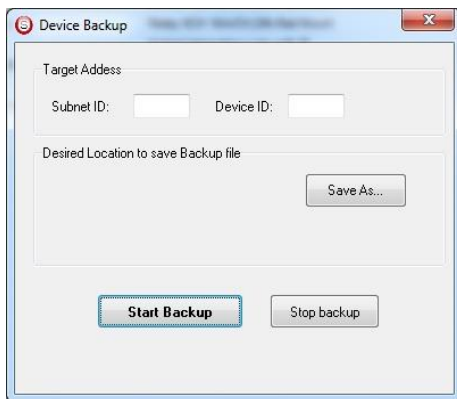
You can change the Language between English and Chinese, and other Languages

### **Backup**

Important to backup and restore your Devices address and setting.

- For Backup: put the subnet and device ID for desire device , choose the location for the backup file then click "Start backup" ,
- For Restore: put the subnet and device ID for desire device, choose the backup which you already made then click "Restore".





## 2-3 Devices address and Search:

Each of S-bus Devices must have its own Address in the Network, the Address for each Device consist of 2 parts:

❖ **Subnet ID**

❖ **Device ID**

The subnet ID can be from 0 – 254

And the Device ID can be from 1 – 254

So you can put up to 65024 Deferent Devices in the same network with deferent subnet and device ID Address

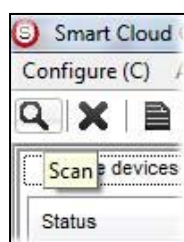
For example one of Dimmer Module Address is (Subnet 1, Device ID 5)

### There is 5 ways to Search for the Devices in the Smart cloud Software

- 1- Fast Search
- 2- Advanced Search
- 3- Manually Search
- 4- Broadcast Address Device Search
- 5- Solve Conflict address search

### **Fast Search**

The Fast search is very useful tools to test your communication and search your devices Fast , the Fast search take around 2-15 seconds to finish load the devices information in your network.



- Click on the **Scan** button
- Click on the **Fast search Button**
- Click **add all**

- Click **Exit** to exit the Window




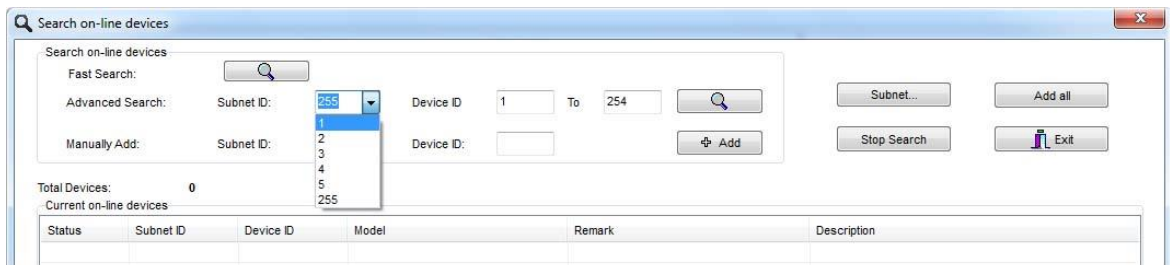
*Fast search can't load all the Network Devices, it is only load part of the devices, it is only good for small project that contain around 10 devices, and to check the network communication with your PC.*

### **Advanced Search**

The Advanced Search is a powerful tool for searching your Devices in the network. You can set the Subnet ID you like to search on it and select the range of device ID you want to search for.

Advanced search take 0.3 seconds for each device to load and total of 80 seconds to finish the search and load for 255 devices totally in each subnet.

- Click on the Online Search button 
- Go to **advanced search** , put the subnet ID and the range of device ID search



- Click **search ICON**
- Click **ADD ALL** after the search finish
- Click **Exit** to exit from the window
- click **stop** to stop the search
- Click **subnet** to add new subnet to the popup Menu subnet list



*Use the Advanced Search Always as your standard way to Load the Devices in the Network to your computer before you program in any new project.*

### Manual Search

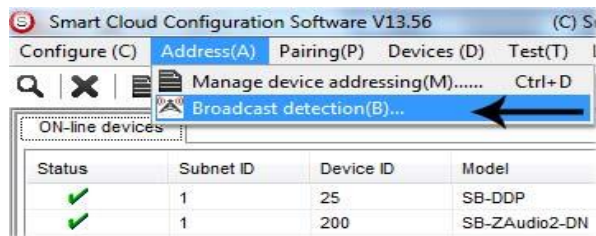
Manual Search is a very fast and useful way to add known Device ID and subnet to your network

Manually Add:	Subnet ID:	<input type="text"/>	Device ID:	<input type="text"/>	<input type="button" value="+ Add"/>
---------------	------------	----------------------	------------	----------------------	--------------------------------------

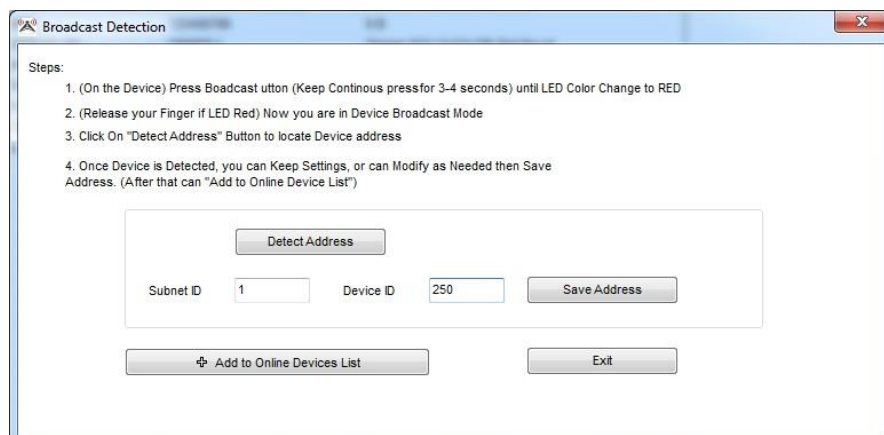
- Type the subnet and device ID that you know
- Click ADD
- Exit the Menu

### Broadcast Address Device Search

This tool is important when you add new devices or you start your new Project installation, many devices could have the same Address or the communication is not yet tested, this tool is important to check the communication between your device and the bus network and to change its initial address in the first time installation.




- On your software Click **Address** then **broadcast detection**
- Go to your device like Dimmer / Relay / sensor or Panel and keep pressing the **broadcast Address button** for 2 ~ 4seconds until the button LED color change to **RED**.
- In your software in the Broadcast Detection window click the **Detect Address Button**.
- Your Device ID and Subnet well appear automatically
- To change the address just type the new subnet ID or device ID you want then click **Save Address**
- Click **ADD to online device list** to load your device in the Devices Network List.
- Click **Exit** to Close the Window

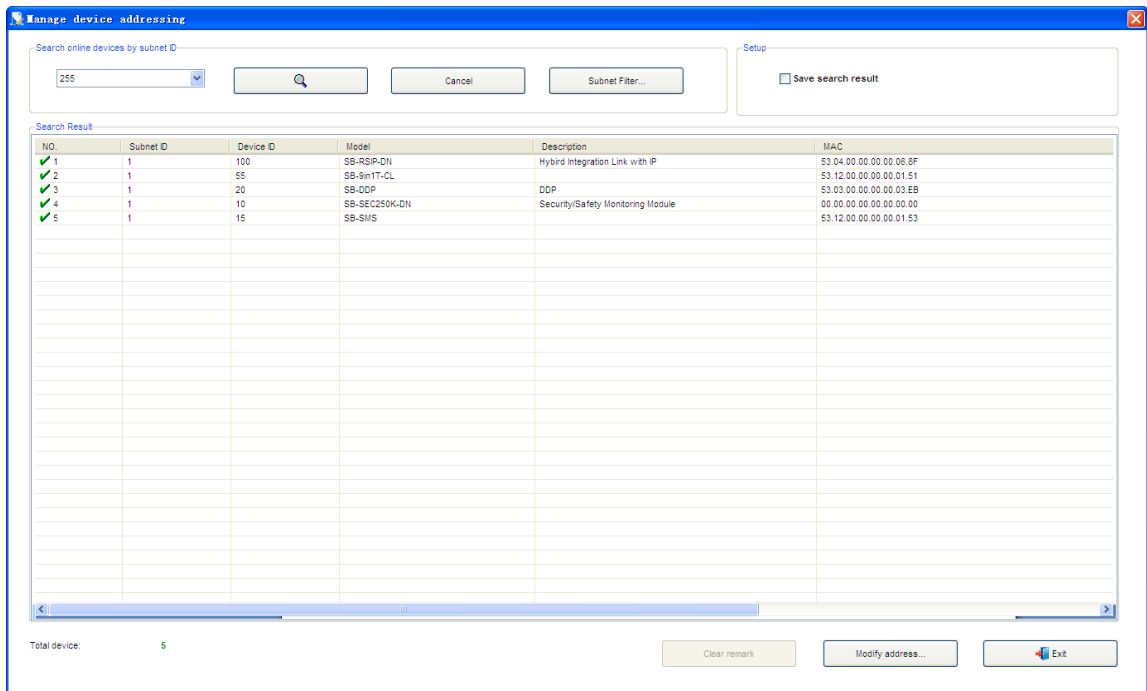




### **Solve Conflict address search**

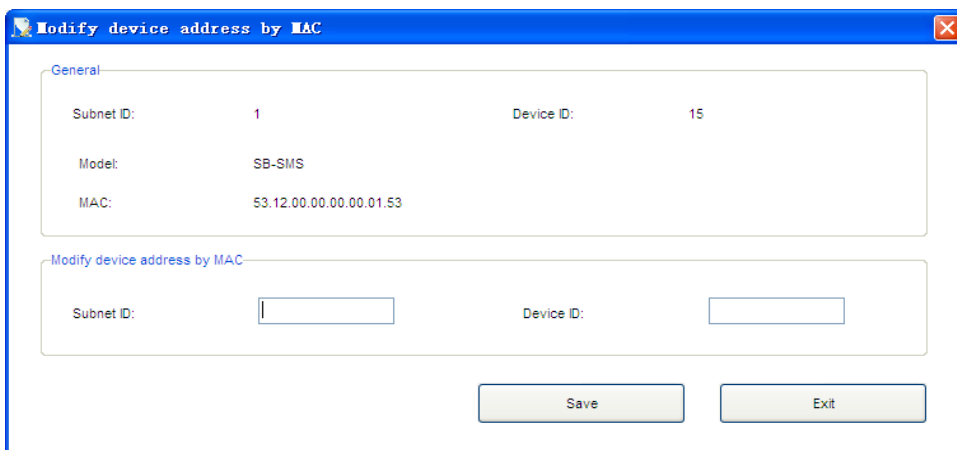
This type of search used to solve the conflict address, for example if 2 devices have the same address, then you can easily change the address of it without the need of disconnecting its wires from the network.

- Click **Address** or click the Address Shortcut icon 



NO.	Subnet ID	Device ID	Model	Description	MAC
✓ 1	1	100	SB-RSP-DN	Hybrid Integration Link with IP	53.04.00.00.00.06.8F
✓ 2	1	55	SB-9in1T-CL		53.12.00.00.00.00.01.51
✓ 3	1	20	SB-DDP	DDP	53.03.00.00.00.00.03.EB
✓ 4	1	10	SB-SEC250K-DN	Security/Safety Monitoring Module	00.00.00.00.00.00.00.00
✓ 5	1	15	SB-SMS		53.12.00.00.00.00.01.53

- Select Subnet **255 (recommended)** or any desired subnet then click the search icon.
- Select the device you want to modify its address then click **modify Address** or double click on it
- New window will open, and then type the new Subnet ID and Device ID, then Click **Save**



General	
Subnet ID:	1
Device ID:	15
Model:	SB-SMS
MAC:	53.12.00.00.00.00.01.53

Modify device address by MAC	
Subnet ID:	<input type="text"/>
Device ID:	<input type="text"/>

## 2-4 Steps of Basic Programming

The Basic Programming for Lighting Motor and HVAC of S-bus Products has procedure of Basic Steps as following

- A- Check the communication between your computer and the Bus
- B- Broadcast each Dimmer, Relay, Motor curtain HVAC control++ initial Address
- C- Change the initial addresses to the desired one (**kindly check 2.5 for addresses range**).
- D- Give name of each Dimmer, Relay Module (Remark).
- E- Check each Lighting channel circuit if working and connected good
- F- Give name for each channel (remark).
- G- Make an excel sheet for all your Dimmers, relays, other module address and circuit name.
- H- Make Area for each Dimmer, Relay module if required .
- I- Make Scene and Sequence for each Module if required .
- J- Make safety power restore and delay time for scenes and safety as required.
- K- Check the curtain module gives it address and name.
- L- Set the channel name, the running time open and close running time.
- M- Give the switch (6 gangs) and panel (DDP) its addresses and Name.
- N- Assign the panel button to the corresponding scene or channel.
- O- Set the button graphic picture for the DDP for each button.
- P- Check the HVAC address give it address and name.
- Q-Set on off relay sequence.
- R- Set the VAV Voltage output if required.
- S- Set the safety HVAC running sequence T- assign the DDP Panel to its HVAC unit.
- U- Set the FAN speed, cool set point, type, adjust temperature sensor on the panel setting.
- V- Set the required graphic for AC, and panel basic setting
- W- Search for PIR motion sensor and give it address and name
- X- Set the sensitivity, way of triggering, motion, no movement delay and commands
- Y-connect the Z-audio 2 to the s-bus And address it
- Z-Test and enhance your programming.



*Following the basic Programming steps procedure will save the programmers time and effort.*

## 2-5 What is The Magic Line In our software ? :

In programming in all S-bus Modules you will find the same line with same fields that's why we called it "Magic Line" .

If you want to send any command you have to use this magic line.

Function no.	Subnet ID	Device ID	Type	Parameter 1	Parameter 2	Parameter 3
1	1	50	Invalid switch	1	2	N/A
2	10	11	Invalid switch	12	13	N/A
3	255	255	Invalid switch	255	255	N/A
4	255	255	Invalid switch	255	255	N/A
5	255	255	Invalid switch	255	255	N/A

If you notice the Command Line is contained of :

**Function No.** : indicated to Order/Function Number , the maximum order you can put is depend of the module .

**Subnet ID** : each device has subnet ID in our software you can put up to 254 subnet ID.

**Device ID** : additional to the Subnet ID also each device must has unique ID to avoid the conflict . and the range is 254.



Each Subnet ID can cover 254 devices and we have 254 subnet ID that means the total Number is 64516 devices.

**Type** : What type of order you want to send, if you notice in the following pic the system has many types depend on the module

Function no.	Subnet ID	Device ID	Type	Parameter 1	Parameter 2	Parameter 3
1	1	50	Scene switch	1	2	N/A
2	10	11	Invalid switch	12	13	N/A
3	255	255	Scene switch	255	255	N/A
4	255	255	Sequence switch	255	255	N/A
5	255	255	Universal switch	255	255	N/A
			Single channel lighting			
			Curtain switch			
			SMS control			
			Panel control			
			Broadcast scene			
			Broadcast channel			
			Security module			
			Zone-Audio 2			

Parameter 1 ,Parameter 2 and Parameter 3 are related to "TYPE" field like this Table :

Function type	Parameter 1	Parameter 2	Parameter 3
Invalid	N/A	N/A	N/A
Scene Switch	Area Number	Scene Number	N/A
Sequence Switch	Area Number	Sequence Number	N/A
Universal Switch	Switch Number	ON / OFF	N/A
Single channel	Channel Number	Brightness 0-100%	Fade time 0S - 60 M
Curtain Switch	Switch Number	Stop / ON/ OFF	N/A
SMS	Message	Message SMS Number	N/A
Panel	Invalid	N/A	N/A
Panel	IR Receiver	ON / OFF	N/A
Panel	Lock	ON / OFF	N/A
Panel	AC Power	ON / OFF	N/A
Panel	AC Cooling	0-30 C , 32- 86F	N/A
Panel	AC Fan Speed	Auto/high/med/slow	N/A
Panel	AC Mode	Auto/Cooling/Heating/FA	N/A
Panel	AC Heating	0-30 C , 32- 86F	N/A
Panel	Rise temp	0-30 C , 32- 86F	N/A
Panel	Reduce temp	1-5 C/F	N/A
Panel	LCD Backlit	ON / OFF	N/A
Panel	LCD status light	1~100	N/A
Panel	Floor heating power	ON / OFF	N/A
Panel	Floor heating mode	Normal-day-night -away	N/A
Panel	Go to page	1~7	N/A

Function type	Parameter 1	Parameter 2	Parameter 3
Broadcast scene	All Areas	Scene Number	N/A
Broadcast Channel	ALL Channel	Brightness 0-100%	Fade time 0S - 60 M
Security Module	Area Number	Arming Mode	N/A
Zone-audio 2	Source Control	SD Card/Audio In/FTP Server/FM Radio	N/A
Zone-audio 2	Play Mode	No Repeat/ Repeat Song/ Continued/ Repeat all	N/A
Zone-audio 2	Play List/Radio Channel	PREV Play List/Next Play List Specify Play List No/PREV	N/A
Zone-audio 2	Play Control	PREV Song/Next Song/Play/Stop	N/A
Zone-audio 2	Volume	VOL	0-100
Zone-audio 2	Volume	TREBLE	Reduce/increase
Zone-audio 2	Volume	BASS	Reduce/increase
Zone-audio 2	Play Specify Song	Folder No.	Song No.



### 3-Security Module:

#### 3-1 Overview:

Security monitoring module can handle 250,000 addressable zones. Ready with 6 Protection preset mode as well as 24 hour monitoring zone. It supports 8 different areas in one module

#### 3-2 Security Module Configuration:

Double Click on the Security Module

1) General Page :

Advanced Security Controller

General Security Basic Auto Dial Out Arming Settings Alarm Commands Vacation Settings Bypass\_Watch dog Advanced Security

Select Device  
Device: 1-10-SB-SEC250K-DN

Configuration  
Mode: SB-SEC250K-DN  
SubID: 1 Device ID: 10

Remark  
Remark: Save

MAC Address  
MAC: 53.01.00.00.00.04.3C

Date Settings for Logic  
Date: Saturday, October 11, 2014 Saturday  
Time: 6 : 37 : 00 (hh:mm:ss)  
Get PC Time Refresh Save

Daylight Saving Time  
Start Time: 1 : 1 : End Time: 1 : 1 : Save

Modify SubID and Device ID according to MAC  
SubID: Device ID: Save

History Log  
Start Time: 10/11/2014 End Time: 10/11/2014  
Password: Read history Clear History New Password

Index	Date	Time	Address	Chan...	Type	Remark
-------	------	------	---------	---------	------	--------

Standby

General Security Basic Auto Dial Out Arming Settings Alarm Commands Vacation Settings Bypass\_Watch dog Advanced Security

Select Device  
Device: 1-10-SB-SEC250K-DN

Configuration  
Mode: SB-SEC250K-DN  
SubID: 1 Device ID: 10 ID

Remark  
Remark: Remark

MAC Address  
MAC: 53.01.00.00.00.04.3C MAC Address

Date Setting, So the Security Module can control the system accurately according to the time

Date Settings for Logic

Date: Saturday , October 11, 2014 Saturday

Time 6 : 37 : 0 (hh:mm:ss)

Get PC Time Refresh Save

Daylight Saving Time

Start Time: 1 : 1

End Time: 1 : 1

Save

Modify SubID and Device ID according to MAC

SubID: Device ID: Save

This Datlight period time can be customized by yourself.

You can change the module's ID here

History Log

Start Time: 2/ 1/2014 End Time: 10/11/2014

Password:

Read history Clear History New Password

Index	Date	Time	Address	Chan...	Type	Remark
0	2014-3-8	9:58:41	1-20	0	arm Away	
1	2014-3-8	10:0:35	1-49	0	arm Vacation	
2	2014-3-8	10:1:30	1-49	0	arm Vacation	
3	2014-3-8	10:2:14	1-49	0	arm Vacation	
4	2014-3-8	10:2:47	1-49	0	arm Vacation	
5	2014-3-8	10:2:58	1-49	0	arm Vacation	
6	2014-3-8	10:3:23	1-49	0	arm Vacation	
7	2014-3-8	10:3:37	1-49	0	arm Vacation	
8	2014-3-8	10:3:52	1-49	0	arm Vacation	
9	2014-3-8	10:4:12	1-49	0	arm Vacation	
10	2014-3-8	10:12:17	1-49	0	arm Vacation	
11	2014-3-8	10:12:40	1-20	0	arm Away	
12	2014-3-8	10:12:53	1-49	0	arm Vacation	
13	2014-3-8	10:13:10	1-49	0	arm Vacation	
14	2014-3-8	10:13:29	1-49	0	arm Vacation	
15	2014-3-8	10:14:7	1-49	0	arm Vacation	
16	2014-3-8	10:14:27	1-49	0	arm Vacation	
17	2014-3-8	10:15:31	1-49	0	arm Vacation	
18	2014-3-8	10:15:52	1-49	0	arm Vacation	
19	2014-3-8	10:16:6	1-49	0	arm Vacation	
20	2014-3-8	10:16:13	1-49	0	arm Vacation	
21	2014-3-8	10:16:36	1-49	0	arm Vacation	
22	2014-3-8	10:16:55	1-49	0	arm Vacation	

You can read the history log here

## 2) Security Basic

Advanced Security Controller

General | Security Basic | Auto Dial Out | Arming Settings | Alarm Commands | Vacation Settings | Bypass\_Watch dog | Advanced Security

Select Device  
Device: 1-10-SB-SEC250K-DN Area No. 1

When you are going to arm or alarm, you can use buzzer for help. Please set in further according to need. At any condition you can set 8 objectives at most.

Entry Delay(10---180S) 10 Reset after Alarm(1---30M) 1  
Exit Delay(10---180S) 10

BUZZER ON  
BUZZER OFF  
EXIT BUZZER 5S LATER  
ALARM BUZZER ON  
ALARM BUZZER OFF  
SIREN ON  
SIREN OFF  
FIRE SIREN ON  
FIRE SIREN OFF

Function no.	Subnet ID	Device ID	Type	Parameter 1	Parameter 2	Parameter 3

Refresh Save Exit

Standby

General | Security Basic | Auto Dial Out | Arming Settings | Alarm Commands | Vacation Settings | Bypass\_Watch dog | Advanced Security

Select Device  
Device: 1-10-SB-SEC250K-DN Area No. 1

When you are going to arm or alarm, you can use buzzer for help. Please set in further according to need. At any condition you can set 8 objectives at most.

The Security Module can protect 8 areas totally

You can remark&Enable each area here

Enable

When you are going to arm or alarm, you can use buzzer for help. Please set in further according to need. At any condition you can set 8 objectives at most.

☒ Siren Delay(10---180S) 10 Reset after Alarm(1---30M) 1  
Entry Delay(10---180S) 10 Exit Delay(10---180S) 10

BUZZER ON  
BUZZER OFF  
EXIT BUZZER 5S LATER  
ALARM BUZZER ON  
ALARM BUZZER OFF  
SIREN ON  
SIREN OFF  
FIRE SIREN ON  
FIRE SIREN OFF

Off the Relay channel to mute the buzzer

Function no.	Subnet ID	Device ID	Type	Parameter 1	Parameter 2	Parameter 3
1	1	214	Single channel lighting control	7(Channel no.)	100(Intensity %)	0:0(Running time/min)
2	255	255	Invalid	255	255	N/A
3	255	255	Invalid	255	255	N/A
4	255	255	Invalid	255	255	N/A
5	255	255	Invalid	255	255	N/A
6	255	255	Invalid	255	255	N/A
7	255	255	Invalid	255	255	N/A
8	255	255	Invalid	255	255	N/A

Buzzer for remind you the system armed succeed or not

You can put commands here for trigger the relay channels to sound the Buzzer or Siren etc.

The Same like above. You can put commands to turn on/off the Buzzer or Siren for the Alarm system

## 3) Auto Dial Out Page



Advanced Security Controller

General Security Basic Auto Dial Out Arming Settings Alarm Commands Vacation Settings Bypass Watch dog Advanced Security

Select Device  
Device: 1-10-SB-SEC250K-DN Area No. 1 10

Device can automatically dial and send out SMS, When needed. Automatic dialing can be set up to 8 targets.

Auto Dial out Target From 1 To 8 Read

Function no.	Subnet ID	Device ID	Type	Parameter 1	Parameter 2	Parameter 3
1	1	33	Invalid	1	100	N/A
2	255	255	Invalid	255	255	N/A
3	255	255	Invalid	255	255	N/A
4	255	255	Invalid	255	255	N/A
5	255	255	Invalid	255	255	N/A
6	255	255	Invalid	255	255	N/A
7	255	255	Invalid	255	255	N/A
8	255	255	Invalid	255	255	N/A

Subnet ID of SMS Module: 1 Mode:   
Device ID of SMS module: 1

1 7:04:00 PM To 7:04:00 PM  
2 7:04:00 PM To 7:04:00 PM  
3 7:04:00 PM To 7:04:00 PM  
4 7:04:00 PM To 7:04:00 PM

Refresh Save Exit

Standby

Select Device  
Device: 1-10-SB-SEC250K-DN Area No. 1 ☐ Auto Dial out Target From 10

Device can automatically dial and send out SMS, When needed. Automatic dialing can be set up to 8 targets.

Auto Dial out Target From 1 To 1 Read

Function no.	Subnet ID	Device ID	Type	Parameter 1	Parameter 2	Parameter 3
1	1	33	Invalid	1	100	N/A
2	255	255	Invalid	255	255	N/A
3	255	255	Invalid	255	255	N/A
4	255	255	Invalid	255	255	N/A
5	255	255	Invalid	255	255	N/A
6	255	255	Invalid	255	255	N/A
7	255	255	Invalid	255	255	N/A
8	255	255	Invalid	255	255	N/A

Not Available now

The ID of the SMS Module

Subnet ID of SMS Module: 1  
Device ID of SMS module: 1

Message for which mode

Mode:   
VACATION ALARM  
AWAY ALARM  
NIGHT ALARM  
NIGHT\_G ALARM  
DAY ALARM  
SILEN ALARM  
POWER ALARM  
TEMPE ALARM  
FIRE ALARM  
GAS ALARM  
PANIC ALARM  
EMERGENCY ALARM  
CURREN ALARM

Message No. 1 7:04:00 PM To 7:04:00 PM  
Message No. 2 7:04:00 PM To 7:04:00 PM  
Message No. 3 7:04:00 PM To 7:04:00 PM  
Message No. 4 7:04:00 PM To 7:04:00 PM

Refresh Save Exit

Message number and the period time to send

Active Link Via Ethernet Current IP: 192.168.1.103 Total Devices: 8

## 4) Arming Settings

Select Device  
Device: 1-10-SB-SEC250K-DN Area No. 1

Different types of arming can set different goals. Each type can be set up to 32 targets.

Arming Target From 1 To 10

Function no.	Subnet ID	Device ID	Type	Parameter 1	Parameter 2	Parameter 3
1	1	213	Broadcast channel	All channels	100(Intensity %)	0.0(Running time)
2	1	214	Invalid	1	0	N/A
3	1	0	Invalid	1	255	N/A
4	0	213	Invalid	1	255	N/A
5	255	213	Invalid	1	255	N/A
6	255	213	Invalid	1	255	N/A
7	255	213	Invalid	1	255	N/A
8	0	213	Invalid	1	255	N/A
9	255	213	Invalid	1	255	N/A

Mode: Auto Arming

12:00:00 AM

12:00:00 AM

12:00:00 AM

Select Device  
Device: 1-10-SB-SEC250K-DN Area No. 1

Different types of arming can set different goals. Each type can be set up to 32 targets.

Arming Target From 1 To 10

Function no.	Subnet ID	Device ID	Type	Parameter 1	Parameter 2	Parameter 3
1	1	213	Broadcast channel	All channels	100(Intensity %)	0.0(Running time)
2	1	214	Invalid	1	0	N/A
3	1	0	Invalid	1	255	N/A
4	0	213	Invalid	1	255	N/A
5	255	213	Invalid	1	255	N/A
6	255	213	Invalid	1	255	N/A
7	255	213	Invalid	1	255	N/A
8	0	213	Invalid	1	255	N/A
9	255	213	Invalid	1	255	N/A

Mode: Auto Arming

12:00:00 AM

12:00:00 AM

12:00:00 AM

Different Arming mode

You can put commands here for each Arming mode. These commands can be triggered once you arm the system.

We can choose auto Arm/Disarm here

Mode: Auto Arming

When to Arm/Disarm

12:00:00 AM

12:00:00 AM

12:00:00 AM

Which mode

12:00:00 AM

12:00:00 AM

12:00:00 AM

## 5) Alarm Commands

General | Security Basic | Auto Dial Out | Arming Settings | Alarm Commands | Vacation Settings | Bypass\_Watch dog | Advanced Security

Select Device  
Device: 1-10-SB-SEC250K-DN Area No. 1

Once alarm, the device triggers different goals according to the type of alarm. Each type can be set

Alarm Targets From 1 To 10

Function no.	Subnet ID	Device ID	Type	Parameter 1	Parameter 2	Parameter 3
1	1	213	Broadcast channel	All channels	0(Intensity %)	0.0(Running time/mm)
2	1	69	Invalid	1	1	N/A
3	0	0	Invalid	255	255	N/A
4	255	255	Invalid	255	255	N/A
5	0	0	Invalid	255	255	N/A
6	255	255	Invalid	255	255	N/A
7	255	255	Invalid	255	255	N/A
8	255	255	Invalid	255	255	N/A
9	255	255	Invalid	255	255	N/A
10	255	255	Invalid	255	255	N/A

General | Security Basic | Auto Dial Out | Arming Settings | Alarm Commands | Vacation Settings | Bypass\_Watch dog | Advanced Security

Select Device  
Device: 1-10-SB-SEC250K-DN Area No. 1

Once alarm, the device triggers different goals according to the type of alarm. Each type can be set

Alarm Targets From 1 To 10

Function no.	Subnet ID	Device ID	Type	Parameter 1	Parameter 2	Parameter 3
1	1	213	Broadcast channel	All channels	0(Intensity %)	0.0(Running time/mm)
2	1	69	Invalid	1	1	N/A
3	0	0	Invalid	255	255	N/A
4	255	255	Invalid	255	255	N/A
5	0	0	Invalid	255	255	N/A
6	255	255	Invalid	255	255	N/A
7	255	255	Invalid	255	255	N/A
8	255	255	Invalid	255	255	N/A
9	255	255	Invalid	255	255	N/A
10	255	255	Invalid	255	255	N/A

Commands for Alarm Situation

Alarm from different mode

## 6) Vacation Settings

General | Security Basic | Auto Dial Out | Arming Settings | Alarm Commands | Vacation Settings | Bypass\_Watch dog | Advanced Security

Select Device  
Device: 1-10-SB-SEC250K-DN Area No. 1

In holiday you can set 8 time period to automatically start and stop working. Each period can be set up to 32 targets.

Enable	Index	Start Time	End Time
<input checked="" type="checkbox"/>	1	3:00	4:50
<input type="checkbox"/>	2	0:00	0:00
<input type="checkbox"/>	3	0:00	0:00
<input type="checkbox"/>	4	0:00	0:00
<input type="checkbox"/>	5	0:00	0:00
<input type="checkbox"/>	6	0:00	0:00
<input type="checkbox"/>	7	0:00	0:00
<input type="checkbox"/>	8	0:00	0:00

Target Num. From 1 To 10

Function no.	Subnet ID	Device ID	Type	Parameter 1	Parameter 2	Parameter 3

In holiday, you can set 8 time period to automatically start and stop working. Each period can be set up to 32 targets.

Enable	Index	Start Time	End Time
<input checked="" type="checkbox"/>	1	3:00	4:50
<input type="checkbox"/>	2	0:00	0:00
<input type="checkbox"/>	3	0:00	0:00
<input type="checkbox"/>	4	0:00	0:00
<input type="checkbox"/>	5	0:00	0:00
<input type="checkbox"/>	6	0:00	0:00
<input type="checkbox"/>	7	0:00	0:00
<input type="checkbox"/>	8	0:00	0:00

Totally we can set 8 period in each vacation day to manage the house Automatically

Target Num. From 1 To 32 ☐ ON ☒ OFF

Start time trigger ON commands  
End time trigger OFF commands

Function no.	Subnet ID	Device ID	Type	Parameter 1	Parameter 2	Parameter 3
1	255	255	Invalid	255	255	N/A
2	255	255	Invalid	255	255	N/A
3	255	255	Invalid	255	255	N/A
4	255	255	Invalid	255	255	N/A
5	255	255	Invalid	255	255	N/A
6	255	255	Invalid	255	255	N/A
7	255	255	Invalid	255	255	N/A
8	255	255	Invalid	255	255	N/A
9	255	255	Invalid	255	255	N/A
10	255	255	Invalid	255	255	N/A
11	255	255	Invalid	255	255	N/A
12	255	255	Invalid	255	255	N/A
13	255	255	Invalid	255	255	N/A
14	255	255	Invalid	255	255	N/A
15	255	255	Invalid	255	255	N/A
16	255	255	Invalid	255	255	N/A

At most we can put 32 commands for each triggering time

Refresh Save Exit

## 7) Bypass& Watch Dog

General | Security Basic | Auto Dial Unit | Arming Settings | Alarm Commands | Vacation Settings | Bypass Watch dog | Advanced Security

Select Device

Device: 1-10-SB-SEC250K-DN ☒ AUTO Bypass

Area No. 1 ☒ Watch dog Check Time (1-60M) 30

When about to arm, this module will check if everyone is OK, for example, if windows are closed. You can select up to 32 devices for checking.

Index	Bypass Enable	Watch Dog Enable	Subnet ID	Device ID	Parameter 1
1	<input type="checkbox"/>	<input checked="" type="checkbox"/>	255	255	255
2	<input type="checkbox"/>	<input checked="" type="checkbox"/>	255	255	255
3	<input type="checkbox"/>	<input checked="" type="checkbox"/>	255	255	255
4	<input type="checkbox"/>	<input checked="" type="checkbox"/>			
5	<input type="checkbox"/>	<input checked="" type="checkbox"/>			
6	<input type="checkbox"/>	<input checked="" type="checkbox"/>			
7	<input type="checkbox"/>	<input checked="" type="checkbox"/>			
8	<input type="checkbox"/>	<input checked="" type="checkbox"/>			
9	<input type="checkbox"/>	<input checked="" type="checkbox"/>			
10	<input type="checkbox"/>	<input checked="" type="checkbox"/>			
11	<input type="checkbox"/>	<input checked="" type="checkbox"/>			
12	<input type="checkbox"/>	<input checked="" type="checkbox"/>			
13	<input type="checkbox"/>	<input checked="" type="checkbox"/>			
14	<input type="checkbox"/>	<input checked="" type="checkbox"/>			
15	<input type="checkbox"/>	<input checked="" type="checkbox"/>			

Refresh Save Exit

Select Device

Device: 1-10-SB-SEC250K-DN ☒ AUTO Bypass

Area No. 1 ☒ Watch dog Check Time (1-60M) 30

When about to arm, this module will check if everyone is OK, for example, if windows are closed. You can select up to 32 devices for checking.

Index	Bypass Enable	Watch Dog Enable	Subnet ID	Device ID	Parameter 1
1	<input type="checkbox"/>	<input checked="" type="checkbox"/>	255	255	255
2	<input type="checkbox"/>	<input checked="" type="checkbox"/>	255	255	255
3	<input type="checkbox"/>	<input checked="" type="checkbox"/>	255	255	255
4	<input type="checkbox"/>	<input checked="" type="checkbox"/>	255	255	255
5	<input type="checkbox"/>	<input checked="" type="checkbox"/>	255	255	255
6	<input type="checkbox"/>	<input checked="" type="checkbox"/>	255	255	255
7	<input type="checkbox"/>	<input checked="" type="checkbox"/>	255	255	255
8	<input type="checkbox"/>	<input checked="" type="checkbox"/>	255	255	255
9	<input type="checkbox"/>	<input checked="" type="checkbox"/>	255	255	255
10	<input type="checkbox"/>	<input checked="" type="checkbox"/>	255	255	255
11	<input type="checkbox"/>	<input checked="" type="checkbox"/>	255	255	255
12	<input type="checkbox"/>	<input checked="" type="checkbox"/>	255	255	255
13	<input type="checkbox"/>	<input checked="" type="checkbox"/>	255	255	255
14	<input type="checkbox"/>	<input checked="" type="checkbox"/>	255	255	255
15	<input type="checkbox"/>	<input checked="" type="checkbox"/>	255	255	255

This Watch Dog can be used to detect the Dry Contact Channel to monitor the sensors like Door/Window Magnet etc.

For example: Now if I want to arm my house, but the some windows are opened. So I have to go and check, then close them before I arm. Otherwise I cannot protect the house. So this Watch Dog can help me to detect the sensors when I want to arm. If the watch Dog finds the situation abnormal, then the system cannot be armed.

Here you need to put the ID of 42 and Which channel

In case you want to ignore this channel you can use Bypass.

Refresh Save Exit

## 8) Advanced Security

General Security Basic Auto Dial Out Arming Settings Alarm Commands Vacation Settings Bypass Watch dog Advanced Security

Select Device  
Device: 1-10-SB-SEC250K-DN Area No. 1

When all settings before still can not help you out of danger, you can start the ninth and tenth grade level protection. Each level can be set to 32 goals.

Target Num. From 1 To 10

Function no.	Subnet ID	Device ID	Type	Parameter 1	Parameter 2	Parameter 3
1	255	255	Invalid	255	255	N/A
2	255	255	Invalid	255	255	N/A
3	255	255	Invalid	255	255	N/A
4	255	255	Invalid	255	255	N/A
5	255	255	Invalid	255	255	N/A
6	255	255	Invalid	255	255	N/A
7	255	255	Invalid	255	255	N/A
8	255	255	Invalid	255	255	N/A
9	255	255	Invalid	255	255	N/A
10	255	255	Invalid	255	255	N/A

Refresh Save Exit

## 9) How to Arm/Disarm the Security Module in the Magic line: Especially in DDP

Security Module can be activated on DDP by creating a dedicated page for security with different activation modes like Away; Night; Day; Vacation; Disarm etc.

Create a dedicated page for security module by selecting any of the page , As standard we make Page 4 as a security page for activation of various arming modes ex : Away; Night; Day; Vacation etc.

On the page make the modes as Single ON and do the configuration as shown below .



**Edit button function configuration**

General

Data acquisition mode: **Device**      Model: **SB-DDP**

Subnet ID: **1**      Device ID: **22**

Remark: **New DDP**      Current button: **1**

Mode: **Single on/off**      Current page: **1**

☐ Modify the intensity synchronously

☐ Modify parameter 3 synchronously

Modify button function configuration

Function no.	Subnet ID	Device ID	Type	Parameter 1	Parameter 2	Parameter 3
1	1	10	Security module	1	Vacation	N/A

The ID of the Security

Area number, Totally we have 8 areas

Arm/Disarm different Mode

Save      Exit

The DDP dedicated security Page is then password Protected via DDP basic setting.